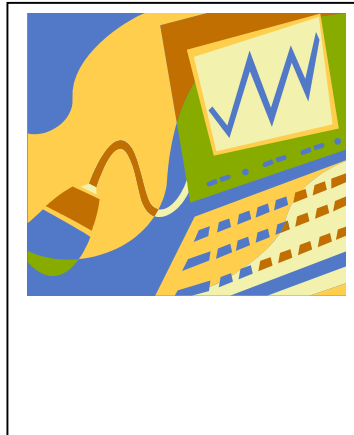


WAPADH

Darlene Hanson, MA CCC
And
Others

Darlene Hanson is a Speech and Language Pathologist in the southern California area providing direct services, assessments, and communication coaching for those who have a severe communication difference, and their teams. She is a Master Trainer in Facilitated Communication.

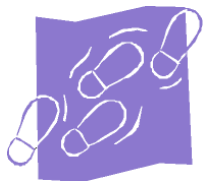


SEPTEMBER 18, 2009
9:00-3:00
WAPADH
9300 SANTA FE SPRINGS RD
SANTA FE SPRINGS, CA

**Facilitated
Communication
Training**

**Communication
Training:
For those who use
alternate modes of
communication**

“Everyone
communicates..”



Communication Training

This seminar/workshop is designed to incorporate the latest research on communication, movement, and autism, as well as other severe disabilities. As we build communication strategies of support and opportunities we see that many students and adults without speech are able to learn to communicate using alternate modes of communication. So many people are gaining more independent communication.

This workshop will discuss the theory, and practice of providing supports to communication, most commonly described as Facilitated Communication Training. Participants will learn through lecture, video presentation, hands on simulations and personal conversations with individuals who have learned to communicate through the use of the strategy.

This training is appropriate and beneficial for those in the school, home, and adult services.

Event Schedule

We will discuss the theory of Augmentative Communication and Facilitated Communication Training. This day will give participants an overview of how the strategy of FCT is used according to Best Practice Standards. This includes the expectations of assessment for benefit, getting started, and documentation. Other speakers include individuals who use support when typing or communicating. Participants will gain knowledge on how to support communication both physically and communicatively so that a greater independence can be reached.

Facilitated Communication Training is a strategy that supports the physical, communication, and emotional needs of a person with a severe communication impairment to move more purposefully to express themselves through an alternate mode of communication. There is currently research that both negates and supports the use of this strategy. Staff should be trained in the impact of movement on attention and communication. Best Practice for strategies which best fit this model can be found in the Facilitated Communication Guidelines manual put out by the Facilitated Communication Institute of Syracuse University. Documentation of skills and strategy use can follow those suggested in the Best Practice Standards outlined by the Facilitated Communication Institute.

September 18, 2009

8:30 Registration

9:00 – 3:00 Workshop

WAPADH is Regional Center Vendorized for this event.

Sign-up Form

Sign up for:	Time	Price
<input type="checkbox"/> individual	Before Sept. 15, 2009	\$50.00
<input type="checkbox"/> Individual Consumer coming with support person is no charge. Please register.	After Sept. 16,, 2009	\$70.00
Circle One:		NC
Parent	Teacher	SLP
Support person	Consumer	

Name _____

Address _____

Email: _____

Make Checks payable to WAPADH: 9300 Santa Fe Springs Rd, Santa Fe Springs, CA 90670

This workshop is vendorized by Regional Center.

Send in a registration for each participant.

WORKSHOP HELD AT WAPADH

9300 Santa Fe Springs Rd.
 Santa Fe Springs, CA
 Phone: 562-946-0467
 Email: dghanson62@charter.net